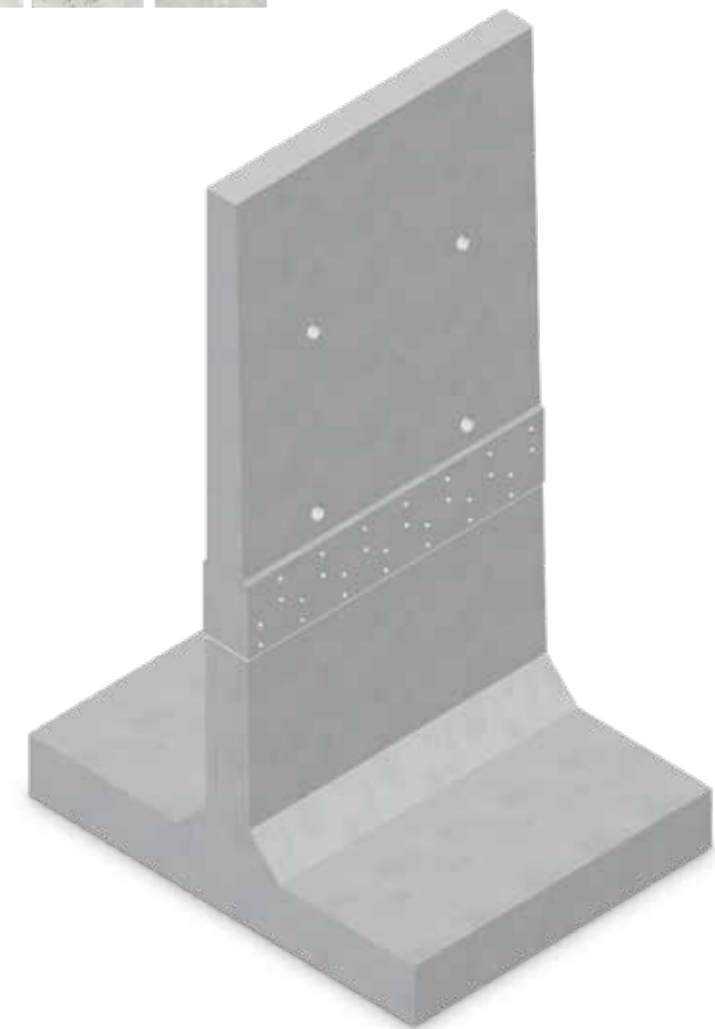


# PRECAST SEGMENTAL RETAINING WALL



FS-IMS | SM | FM-02 Version 1.1



**Head office:**

[FUJI Silvertch Concrete Pvt. Ltd.](#)

4th Floor, House No. 5  
Magnet Corporate Park  
Near Zydus Hospital, S. G. Highway  
Thaltej, Ahmedabad 380 054.

Phone: +91 79 4021 0000

Email: [info@fujisilvertch.com](mailto:info@fujisilvertch.com)

Web: [www.fujisilvertch.com](http://www.fujisilvertch.com)

**Regional offices:**

**Delhi-NCR, India**

Level 18, One Horizon Center, Golf Course Road  
DLF Phase-5, Sector 43, Gurgaon 122 002.

**Mumbai, India**

309, H-2, Western Express Highway  
Nav Prabhat Society, Navpada, Vile Parle (E)  
Mumbai 400 057.

**Vadodara, India**

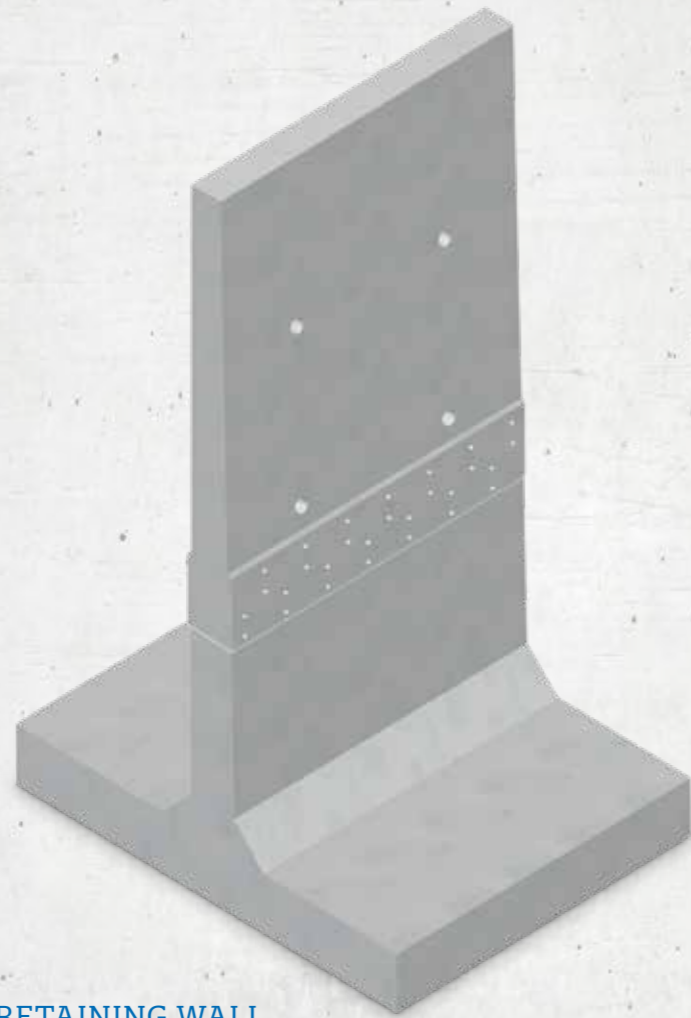
518, K-10 Grand, B/h Atlantis  
Sarabhai Campus, Alkapuri Road  
Vadodara, Gujarat 390 007.



Please scan the  
QR code on your  
smartphone to save  
the contact details



# SEGMENTAL RETAINING WALL



## PRECAST SEGMENTAL RETAINING WALL

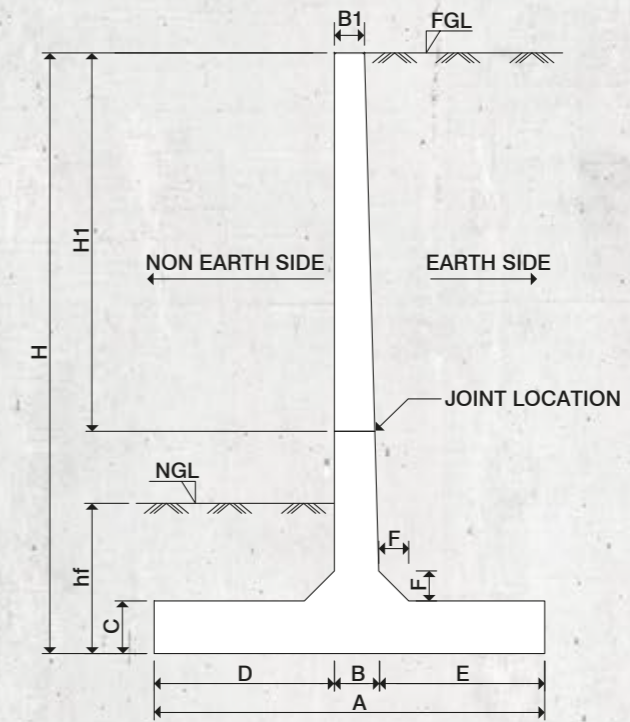
High-strength, precast reinforced cement concrete retaining wall, manufactured as per Japanese Industrial Standards (JIS). Made with high performance materials and designed to retain dead load, earth load and imposed load for highway, railway and other infrastructure in India.



Actual installation photos from W - DFC Project

Dimensional details of Segmental Retaining wall 4.0 m

H	A	B	B1	C	D	E	F	H1	hf
4000	2600	300	200	350	1200	1100	200	2500	1000



Dimensional details of Segmental Retaining wall H:8.0 m and H:9.15 m

H	A	B	B1	C1	C2	D	E	F	H1	hf
8000	5800	800	250	300	700	2400	2600	750	5600	1700
9150	6500	900	250	300	700	2800	2800	750	6500	1750

